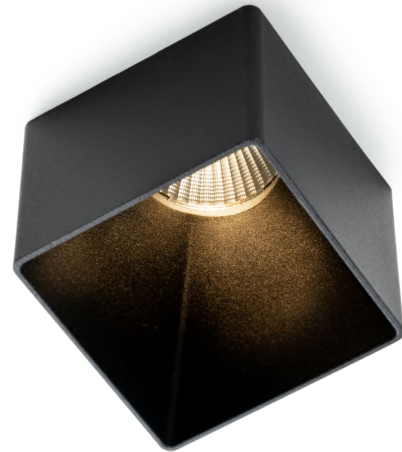




SLC DESIGN BLOCKY DOWNLIGHT

R62 TED

Blocky has a pulled-down edge of 60 mm for glare reduction and character. The light source is deeply recessed and is not visible from the side angles. This gives the impression that there is a cube with a light inside, not a downlight.



Light technic	
Product ID	B_3234518
Beam angle	Medium beam 21-40° °
Reflector	High-gloss
Colour rendering index CRI	90-100
Lamp type	LED not exchangeable
Light outlet	Direct
Light sharing	Symmetric
With light source	Yes
Colour of light	White
Rated life time L70/B50 at 25 °C	50000 Hours
Colour consistency (McAdam ellipse)	SDCM3
Light distributor	Reflector
Energy efficiency class of the built-in lamp	A++, A+, A (LED)
Technical data	
Protection class	II
Surface protection	Powder coating
Suitable for lamp power	9 - 9
Type of control gear	LED operating device current-controlled
Material housing	Aluminium
Material cover	Plastic, transparent
Degree of protection (IP)	IP54
Covering of the luminaire with thermally insulating material possible	No
Control gear included	Yes
Fit for workplace according to EN 12464-1	No
Max. system power	9 W
Adjustability	Not adjustable
Rated ambient temperature according to IEC62722-2-1	-10 - 45 °C
Dimming phase cut-off	Yes
Power factor	0.95
Input	

29.10.2020

Subject to changes and printing errors

Voltage type	AC/DC
Nominal voltage	220 - 240 V
Output	
LED nominal current at constant current	230 - 230 mA
Installation	
Height/depth	103 mm
Built-in width	62 mm
Built-in height/depth	43 mm
Length	70 mm
Built-in length	62 mm
Width	70 mm
Outer diameter	70 mm
Conductor cross section	0.35 mm ²
Connection type	Plug clamp
Built-in diameter	62 mm
Suitable for suspended mounting	No
Number of poles	3
Suitable for wall mounting	No
Suitable for built-in mounting	Yes
Connectable conductor cross section	0.75 - 2.5 mm ²
Type of wiring	Suitable for through wiring
Suitable for ceiling mounting	Yes
logistics data	
Imported by	The Light Group
Brand	SLC
General data	
Pallet length	1200 mm
M-pack length	585 mm
F-pack length	115 mm