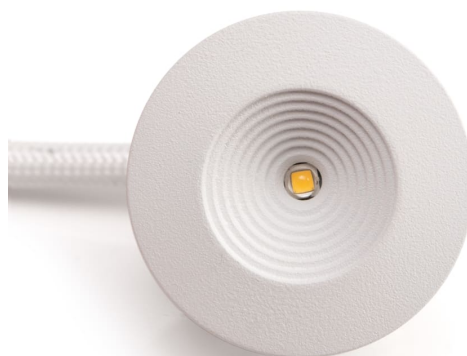


# SLC MINIONE FIXED R25 WH 927 IP44

## 100°



SLC MiniOne Fixed is a stylish mini-downlight with high lumen output and a wide beam angle designed for decorative lighting. Get the final touch on your project with SLC MiniOne. Connect up to 6 downlights on one driver. It can be built-in or surface mounted with the MiniOne Tube accessory. IP44 (Front) / IP21 (Back).



Light technic	
Product ID	SLC1204
Beam angle	100 °, Extreme wide beam >80° °
Colour rendering index CRI	90-100
Lamp type	LED not exchangeable
Light outlet	Direct
Light sharing	Symmetric
With light source	Yes
Colour temperature	3000.0 - 3000.0 K
Rated luminous flux according to IEC 62722-2-1	165 lm
Colour of light	White
Colour consistency (McAdam ellipse)	SDCM3
Light distributor	None
Luminaire efficacy	55 lm/W
Technical data	
Protection class	III
Surface protection	Powder coating
Type of control gear	LED operating device current-controlled
Material housing	Aluminium
Material cover	Other
Degree of protection (IP)	IP44
Control gear included	No
Max. system power	3 W
Adjustability	Not adjustable
Dimming phase cut-off	Yes
Input	
Voltage type	DC
Nominal voltage	3.0 - 18.0 V
Installation	
Height/depth	18 mm

29.03.2024  
Subject to changes and printing errors

<b>Built-in height/depth</b>	16 mm
<b>Outer diameter</b>	32 mm
<b>Conductor cross section</b>	0.35 mm <sup>2</sup>
<b>Connection type</b>	Push-in clamp
<b>Number of poles</b>	2
<b>Suitable for built-in mounting</b>	Yes
<b>Suitable for surface mounting</b>	Yes
<b>Type of wiring</b>	Suitable for through wiring
<b>Suitable for ceiling mounting</b>	Yes
<b>EPREL Data</b>	
<b>EPREL Energy Class</b>	G
<b>F-Pak</b>	
<b>F-pack width</b>	60 mm
<b>F-pack height</b>	57 mm
<b>F-pack length</b>	80 mm